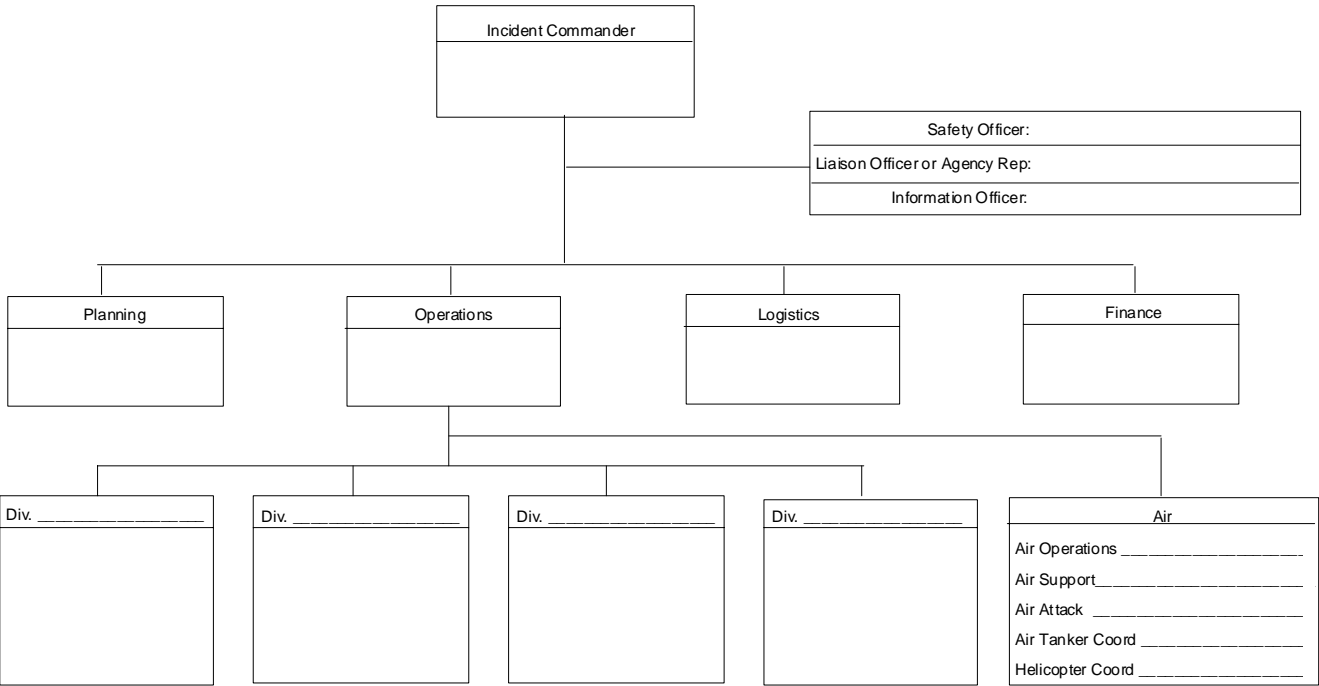


INCIDENT BRIEFING	1. Incident Name PandOrA	3. Time 11/1/06 2:30pm
--------------------------	-----------------------------	------------------------------

4. Map Sketch

Outbreak of novel Flu is county wide with no discernable distribution pattern geographically

5. Current Organization (see 203)



Page 1 of 2	6. Prepared by (Name and Position) Margaret Lentell, Planning Section Deputy Chief
-------------	---------------------------------------------------------------------------------------

6. Resources Summary				
Resources Ordered	Resource Identification	ETA	On Scene	Location/Assignment
Vaccine – 50,000 doses Multnomah County	State Health Division	Available now at the State	none	Distribution plan to be announced
137k Mult County	State Health Division	? unknown	none	
Personnel				Staff working on Epi response 2 nurses 1 epi 1 hsa
				Nurse- business continuity
				OA- epi response
				OA- business continuity
7. Summary of Current Actions				

Incident description:

2nd week (day 11) of confirmed influenza epidemic. Droplet spread. 25% attack rate, lower for 49 year olds and over. It is expected that vaccine & community control methods will control spread. Community control methods include closing schools and public gathering. Vaccine is not specific for the current virus. Tamiflu is effective but no local supply, already depleted.

Expect 475 deaths, 300 excess deaths. Death lag is 2-3 weeks after infection. Expect work force to be 80% of normal. Already 25% of school staff & students are out. Hospitals have cancelled elective procedures. Inadequate ventilator and other equipment. Public afraid. Latino community is concerned about unequal access to vaccine and care. Also, cultural issues will compound implementation efforts.

Plan to vaccinate both at community sites and private locations, accommodate special needs.

In place:

1. Vaccine: 1st 50,000 are on its way. The 700,000doses (at state level) will be enough to vaccinate all groups in Tier 1 and some in tier 2. Distribution will be thru normal State program.
2. Projection for the number of people presenting at the community sites.
3. PSAs for self-care, transmission prevention, community interventions.
4. Recommendations for community intervention.
5. Long range planning group
6. System to track status of epidemic.

Planning cycle is for the period of 7AM 11/2/06 through 7am 11/3/06.